

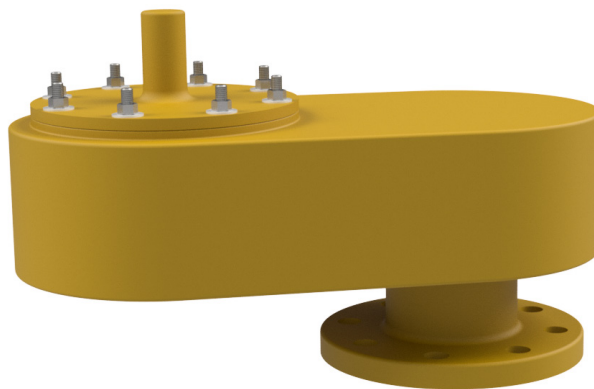
94080 FRP Vent

The Shand & Jurs model 94080 Vacuum Vent is constructed of Fiberglass Reinforced Plastic (FRP). It has been designed for superior corrosion resistance in oxidizing environments. The 94080 is ideally suited for a variety of tank storage and product conservation applications. It is applicable for the chemical, petroleum, petrochemical and waste treatment industries. The function of this vent is to relieve vacuum conditions in liquid product storage tanks, and also withstand the pressure of the stored product when not operating under a vacuum. Its method of operation allows pallets in the vent housing to open and close permitting the vacuum relief necessary to remain within permissible settings thus avoiding damage to the tanks.

The weights are encapsulated lead. Available in 2" through 12" sizes with standard ANSI 125/150 lb or EN1092-1 PN10/16 flanges.

Construction options such as encapsulated weights and extra corrosion barriers allow for use in extremely corrosive environments such as 36% HCL.

The 94080 is easy to install and is completely compatible with existing pipes, vents and tank fittings. Its low initial cost and ease of maintenance make the FRP Vacuum Vent an attractive alternative to Stainless Steel, Hastelloy construction.



Features

- One piece construction prevents product leakage
- Self Draining Housing prohibits condensate from seating surface
- Simple installation & maintenance
- Vent protection from freezing, binding and clogging
- 470 Derakane standard, 411 Derakane and Furan available

Specifications:

Sizes:

2", 3", 4", 6", 8", 10", 12"

Standard Pressure & Vacuum Setting:

1/2 oz./in.²

Flange:

To match drilling of ANSI 125/150 lb., EN1092-1 PN10/16.

Maximum Vacuum Settings:

Size	Maximum Vacuum
2"	8 oz/in ²
3"	8 oz/in ²
4"	8 oz/in ²
6"	8 oz/in ²
8"	8 oz/in ²
10"	8 oz/in ²
12"	8 oz/in ²

Materials of Construction:

Body:

Fiberglass and choice of vinyl ester resins 411 or 470 Derakane. Furan also available.

Weights:

FRP Encapsulated lead.

External Hardware:

316 S.S. (Hastelloy "C" Optional)

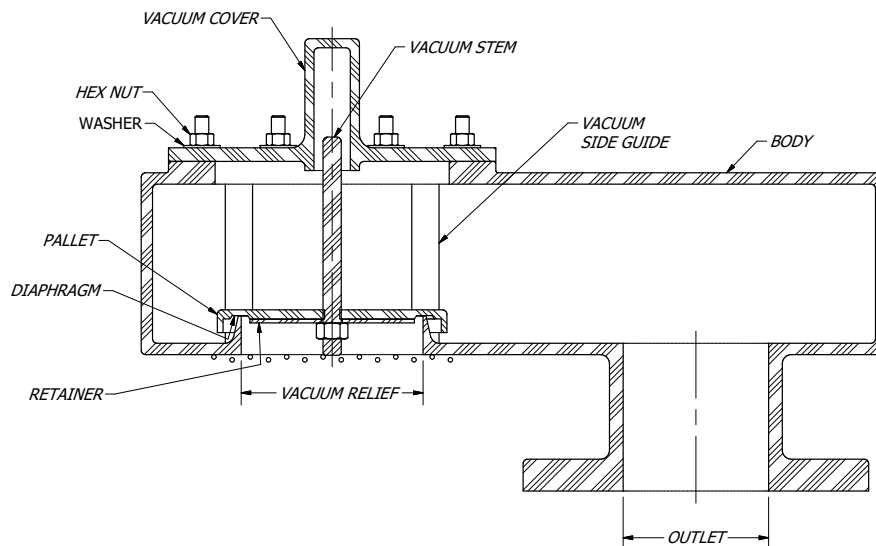
Internal Stem & Guides:

Same material as body

Diaphragm:

FEP Teflon

Vacuum Vent Assembly:



94080 Ordering Guide

Model Number Selection

The model number will consist of a base number **94080** followed by 5 digit numbers. These digits will represent 5 sets of option tables.

94080 - AB - CD - E

Ordering Information

Specify:

1. Model 94080 Fiberglass Reinforced Plastic Vacuum Vent
2. Type of Size
3. Type of Pressure and Vacuum Setting
4. Temperature Range
5. Flange Type

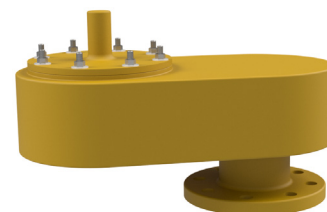


Table A - Size (Inlet x Outlet)

Option A	Description
2	2"
3	3"
4	4"
6	6"
8	8"
0	10"
1	12"

Table B - Body Material & Flange Type

Option B	Body Material	Flange Type
A	Derakane 470 (316SS Studs)	ANSI-FF 150#
B	Derakane 470 (Hastelloy "C" Studs)	ANSI-FF 150#
C	Derakane 411 (Hastelloy "C" Studs)	ANSI-FF 150#
D	Furan (Hastelloy "C" Studs)	ANSI-FF 150#
E	Derakane 470 (316SS Studs)	EN1092-1 PN16 FF
F	Derakane 470 (Hastelloy "C" Studs)	EN1092-1 PN16 FF
G	Derakane 411 (Hast "C" Studs)	EN1092-1 PN16 FF
H	Furan (Hastelloy "C" Studs)	EN1092-1 PN16 FF

Table C* - Size of Pallet Assembly

Option C	Description
2	2"
3	3"
4	4"
6	6"
8	8"
0	10"
1	12"

*Option "C" must match option "A"

Table D - Setting & Weight Type

Option D	Description
A	LOW: 0.5 oz/in ² to 3.0 oz/in ²
B	MED: 3.01 oz/in ² to 8.0 oz/in ²
C	HIGH: 8.01 oz/in ² to 16 oz/in ²

Table E - Options

Option F	Description
0	None
A	Polypropylene Vacuum Screen