

Internal Safety Shutoff & Operating Valve

The Shand & Jurs 96330 Internal Safety Shutoff and Operating Valve provides automatic, foolproof, quick acting shutoff of product flow in tanks and manifold lines. Extremely versatile, it can be mounted in the tank or in line. This valve is used most effectively as a safety shutoff or operating valve in manifold lines. Its action is bi-directional with respect to flow and pressure, and its balanced piston design resists opening due to tank or line pressure.

This valve also is ideally suited for "switch service" of LP-GAS, anhydrous ammonia and similar products. Alternate materials of construction may be specified to meet other product requirements and operating temperatures in the range of -50° to +150°F.

The 96330 Internal Safety Valve is designed to be held in a normally closed or open position by a spring-loaded balanced type piston. The valve checks closed in either direction when hydraulic operating pressure is removed.

Several unique items are incorporated providing the most reliable quick-closing shutoff valve available.

A) The piston seal is sensitive to pressure differential to seal fluid in either direction. It is self adjusting to pressure conditions, and the configuration provides ideal wiping and bearing action.

B) The plunger seal is spring-loaded to adjust to wear and thermal conditions.

C) Easy Maintenance-New one piece seals greatly improve maintainability.

D) Optional redundant springs - either capable of closing the valve.



Features

- One piece self-adjusting seals greatly improve maintainability
- Fusible plugs automatically release operating pressure when temperature exceeds its melting point
- Fail safe under all conditions, unaffected by tank or line pressure
- Adaptable to ambient fluid products such as LP-Gas and/or Ammonia
- Efficient as an operational valve or on-off service with flow and pressure in either direction
- Zero air leakage @ 100 psig between tank and line.
- Bubble tight from product to hydraulic system
- Optional Redundant Dual Springs provide added protection

Specifications:**Pilot Operating Data:**

Operating Pressure:
Range: 450 to 1000 PSIG

Operating Fluid:
Mineral Oil or Synthetic Fire Resistant Fluid

Valve Size:

2"-10" with Various Mounting Flange Sizes,
ANSI B16.5 Class Raised Face (Full Flange or Partial
"J" Flange) 150 lb. or 300 lb.

Main Valve Data:

Type of Service:
LP - Gas, Ammonia and similar

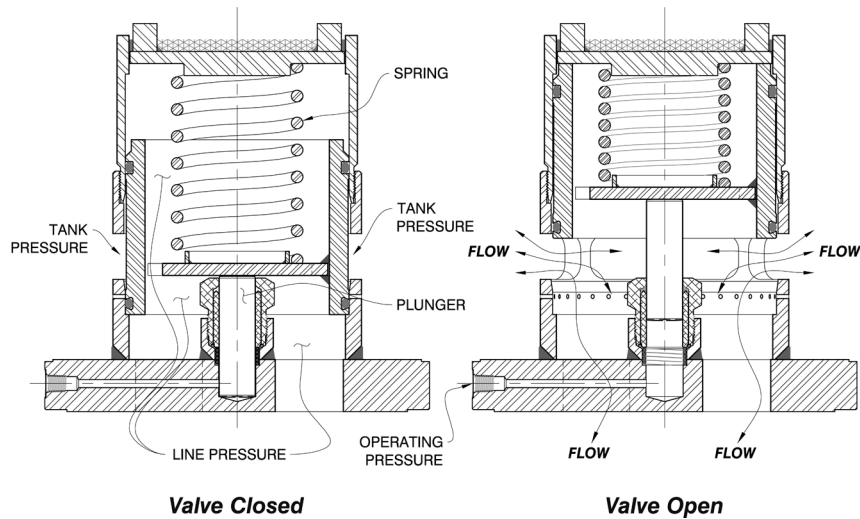
Maximum Product Pressure:
250 PSIG

Product Temperature Range:
-20°F to +150°F. (Standard)

Valve O-Ring Seal/ Service
HNBR - Carboxylated BUNA/LPG/Propane
EPDM - Ethylene Propylene/Ammonia

Tank Valve Size Inches	Tank Mtg.	In-Line Mtg.
	CV	
2	75	68
3	165	123
3 x 4	165	142
4	290	245
4 x 6	290	267
6	635	493
6 x 8	635	571
8	1120	878
8 x 10	1120	938
8 x 12	1120	943
8 x 14	1120	952
8 x 16	1120	960
8 x 20	1120	966
10	1612	1264
10 x 12	1612	1362
10 x 14	1612	1372
10 x 16	1612	1383
10 x 18	1612	1395

Principle of Operation:



To open the valve, hydraulic fluid pressure is applied to the plunger which moves to open the normally closed piston.

Quick shutoff is accomplished by the following remote controlled mechanism:

1. Fusible plug(s) in the operating hydraulic line which release at a predetermined temperature;
2. Frangible element(s) which can be quickly snapped off by hand;
3. A quick manual release on the hydraulic operating fluid source;
4. Fail-safe pneumatic operator for remote valve closure.
5. Remote through special solenoid valve.

Operating pressure to fully open valve ranges from 450 to 1 100 psig depending on product pressure and valve size. Valves are provided with raised face flanges as standard to match ANSI 300 lb. Optional oversize flanges are available when required.

Typical Safety Valve Installation:

Filling And Discharge Installation Using Shut-Off Valve And In-Line Housing

Positive Shut-Off Valve Is Required When Used As Filling And Discharge Connection

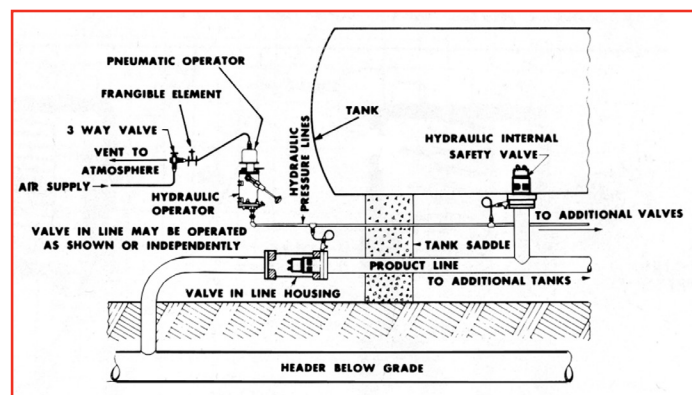
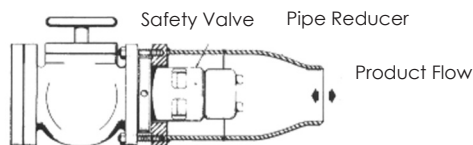
In-Line Housing



Filling And Discharge Installation Using Shut-Off Valve And Pipe Reducer

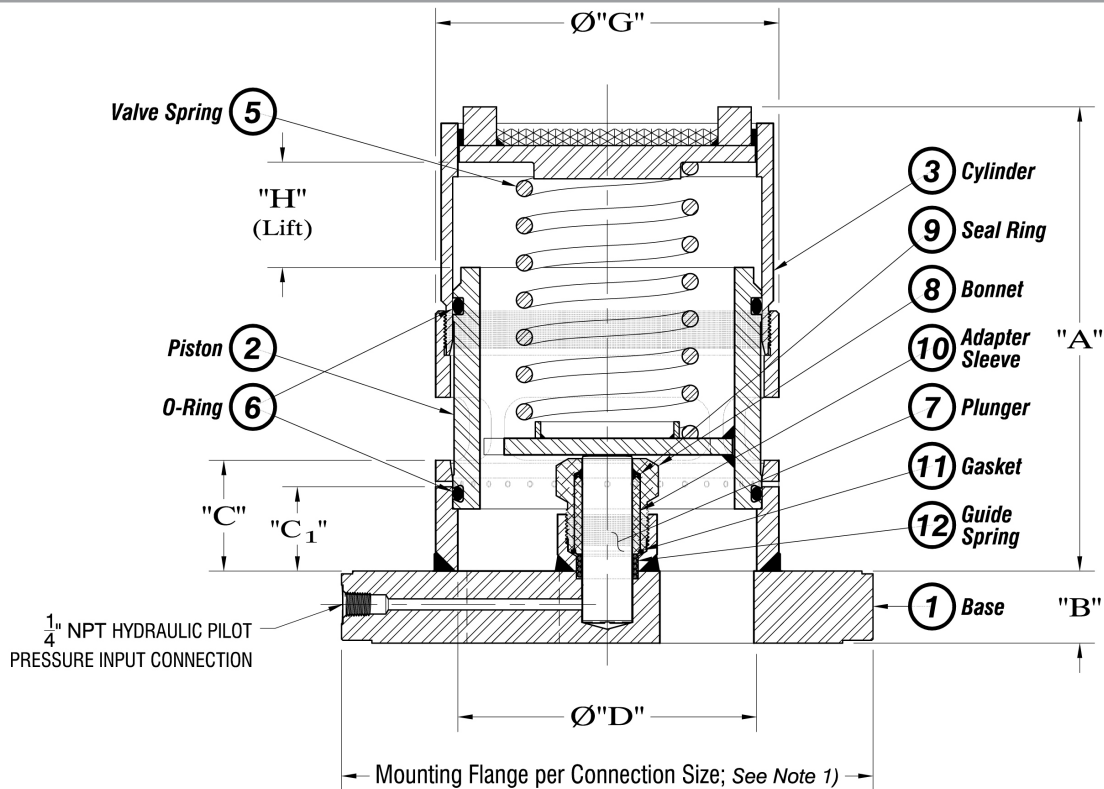
Positive Shut-Off Valve Is Required When Used As Filling And Discharge Connection

Pipe Reducer



All designs subject to change. Certified dimensions and specifications available upon request.

Dimensions:



Size	A	B	C	C1	D	G	H	Net Weight lb.
2"	8 7/8"	7/8"	1 15/16"	1 9/16"	2 7/16"	3 5/8"	1 1/2"	16
3"	7 13/16"	1 1/8"	1 7/8"	1 7/16"	3 5/8"	4 11/32"	1 1/2"	18
3" x 4"	7 13/16"	1 1/8"	1 7/8"	1 7/16"	3 5/8"	4 11/32"	1 1/2"	23
4"	9 1/8"	1 1/4"	2 21/32"	2 1/8"	4 5/8"	5 13/16"	1 5/8"	34
4" x 6"	9 1/8"	1 7/16"	2 21/32"	2 1/8"	4 5/8"	5 13/16"	1 5/8"	48
6"	10 9/16"	1 5/8"	2 1/2"	1 7/8"	6 5/8"	7 27/32"	2 1/4"	62
6" x 8"	10 9/16"	1 5/8"	2 1/2"	1 7/8"	6 5/8"	7 27/32"	2 1/4"	78
8"	12 9/16"	1 5/8"	2 5/8"	2"	7 15/16"	9 1/2"	3 1/4"	115
8" x 10"	12 9/16"	1 7/8"	2 5/8"	2"	7 15/16"	9 1/2"	3 1/4"	142
8" x 12"	12 9/16"	2"	2 5/8"	2"	7 15/16"	9 1/2"	3 1/4"	230
8" x 14"	12 9/16"	2 1/8"	2 5/8"	2"	7 15/16"	9 1/2"	3 1/4"	235
8" x 16"	12 9/16"	2 1/8"	2 5/8"	2"	7 15/16"	9 1/2"	3 1/4"	240
8" x 20"	12 9/16"	2 1/8"	2 5/8"	2"	7 15/16"	9 1/2"	3 1/4"	245
10"	14 11/16"	1 7/8"	3 1/2"	2 5/8"	10"	11 1/2"	4"	250
10" x 12"	14 11/16"	1 7/8"	3 1/2"	2 5/8"	10"	11 1/2"	4"	260
10" x 14"	14 11/16"	2 1/8"	3 1/2"	2 5/8"	10"	11 1/2"	4"	280
10" x 16"	14 11/16"	2 1/4"	3 1/2"	2 5/8"	10"	11 1/2"	4"	300
10" x 18"	14 11/16"	2 1/4"	3 1/2"	2 5/8"	10"	11 1/2"	4"	320

Mounting Flange	"J" 300 Lb	"J" 150 Lb	"Full" 300 Lb
2"	4 1/4"	4"	6 1/2"
3"	5 3/4"	5 1/4"	8 1/4"
3" x 4"	7"	6 3/4"	10"
4"	7"	6 3/4"	10"
4" x 6"	9 3/4"	8 5/8"	12 1/2"
6"	9 3/4"	8 5/8"	12 1/2"
6" x 8"	12"	10 5/8"	15"
8"	12"	10 5/8"	15"
8" x 10"	14 1/8"	13 1/4"	17 1/2"
8" x 12"	16 1/2"	16"	20 1/2"
8" x 14"	19"	17 5/8"	23"
8" x 16"	21 1/8"	20 1/8"	25 1/2"
8" x 20"	25 5/8"	23 3/4"	30 1/2"
10"	14 1/8"	13 1/4"	17 1/2"
10" x 12"	16 1/2"	16"	20 1/2"
10" x 14"	19"	17 5/8"	23"
10" x 16"	21 1/8"	20 1/8"	25 1/2"
10" x 18"	23 3/8"	21 1/2"	28"

NOTE 1. Sizes with standard "J" flanges are furnished without bolt holes. Outside diameter of flange matches inner circle of bolt holes "F" or "FF". Full size flanges "K" are furnished with bolt holes and meet ANSI dimension standards (not shown).

All designs subject to change. Certified dimensions and specifications available upon request.

96330**Internal Safety Shutoff & Operating Valve****SHAND & JURS**

96330 Ordering Guide

Model Number Selection

The model number will consist of a base number **96330** followed by 7 digit numbers. These digits will represent 4 option tables.

96330 - ABC - D - E - FG

Ordering Information

Specify:

1. Model 96330 Internal Safety Shutoff and Operating Valve
2. Valve Size and Flange Size
3. Type of Product
4. Temperature Range of Product
5. Maximum Pressure of Product
6. Type and Maximum Pressure of Operating Fluid
7. Accessories, As Required

**Table ABC - Vent x Flange Size Material**

Option AB	Size	Option C	Material
09	2" x 2"	A	Steel
11	3" x 3"	B	316SS
12	3" x 4"		
13	4" x 4"		
14	4" x 6"		
15	6" x 6"		
16	6" x 8"		
17	8" x 8"		
18	8" x 10"		
19	8" x 14"		
20	8" x 12"		
21	8" x 16"		
22	8" x 20"		
23	8" x 18"		
26	10" x 10"		
27	10" x 12"		
28	10" x 14"		
29	10" x 16"		
30	10" x 18"		

Table D - Hydraulic (Gasket) Seal / Valve (O-Ring) Seal

Option D	Description
2	Teflon / HNBR
3	Teflon / EPDM

Table E - Single / Dual Spring (Valve Size)

Option E	Description
1	Single Spring (All Sizes)
6	Dual Spring - 6" Valve
8	Dual Spring - 8" Valve
0	Dual Spring - 10" Valve

Table FG - Flange Type/Finish (Smooth/Serrated)

Option FG	Description
00	"J" Flange 300# RF Smooth
01	"J" Flange 300# SRF Serrated
10	ANSI Flange 300# RF Smooth
11	ANSI Flange 300# SRF Serrated

SHAND & JURS

5911 Butterfield Road Hillside, IL 60162 • tel: (708) 236-6000 • fax: (708) 236-6006
 sales@ljtechnologies.com • www.ljtechnologies.com • ISO 9001: 2008 Certified

Rev: 96330-4A