

95021 Gauge Hatch

The Shand & Jurs 95021 Gauge Hatch is designed to provide easy access to storage tanks for gauging product level or temperature and product sampling.

It is available in a range of sizes from 4" through 12", and can be ordered with one of the two optional clamp covers. Maximum working pressure for the clamped cover versions is 3.0 psig.

The standard hatch features a foot opening cover, flexible sealing member and tape gauge marker.

Clamp down covers are available in either the traditional screw-down or the revolutionary "Quik-Clamp" Cam Lock. The "Quik-Clamp" allows the operator to open the hatch with his feet, eliminating the need to remove work gloves or set down hand tools. This feature is also very useful in cold environments or when dealing with hazardous products.

An optional S-hook for suspending a thermometer or sampler is available.

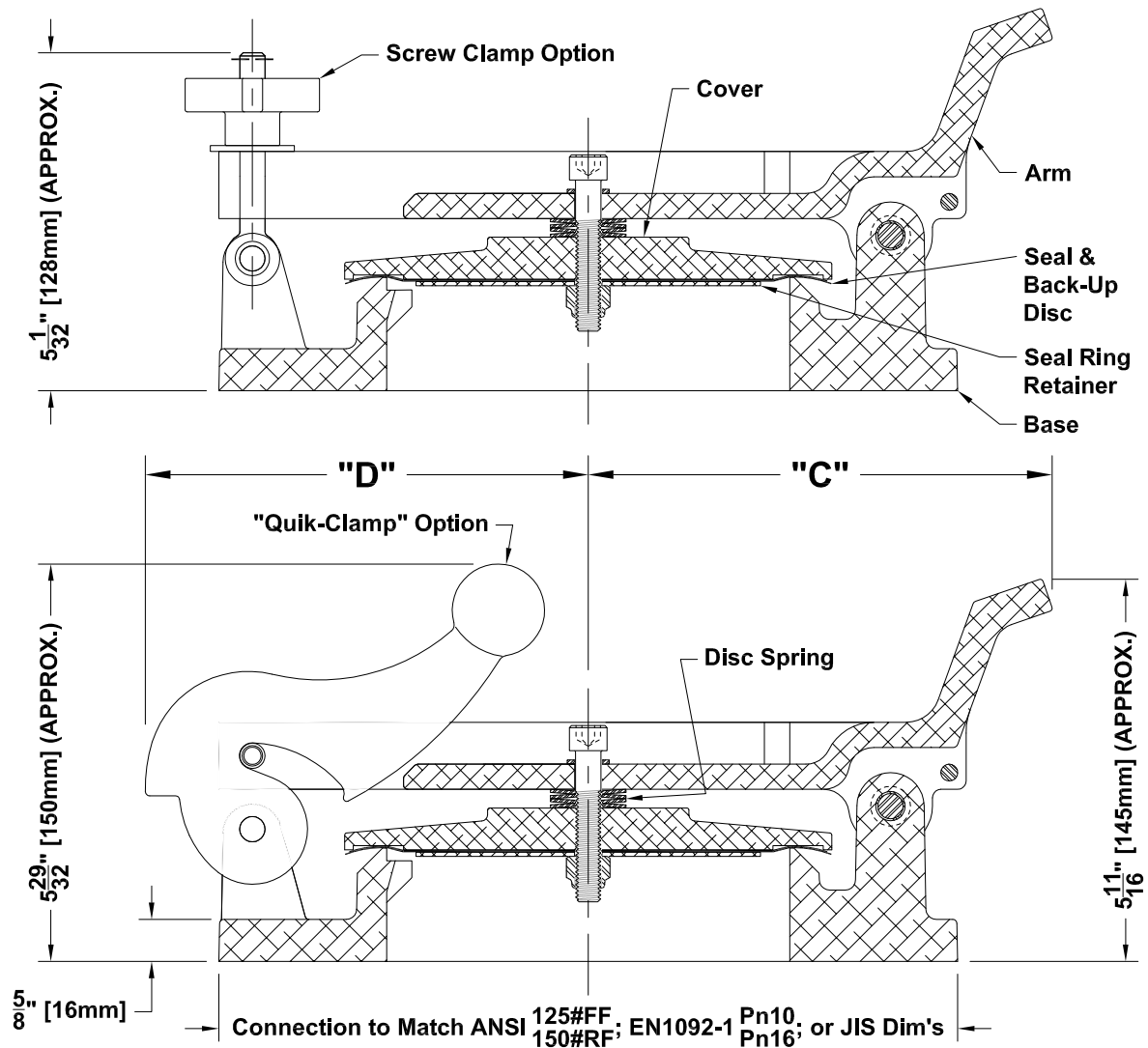
Materials of construction include aluminum, steel, 316 stainless steel.



Features

- Easy access for product gauging or sampling
- "Quik-Clamp" option allows for hands-free operation
- Available in sizes from 4" to 12"
- Materials of construction include aluminum, steel, 316 SS
- FEP diaphragm ensures safe tight seal
- Maximum working pressure 3 PSIG

Dimensions



Size	Inlet Diameter	Flange "D"	"C"	"D"
4"	4" (102 mm)	9" (229 mm)	5 $\frac{29}{32}$ " (150 mm)	5 $\frac{19}{32}$ " (142 mm)
6"	6" (152 mm)	11" (279 mm)	6 $\frac{29}{32}$ " (175 mm)	6 $\frac{19}{32}$ " (168 mm)
8"	8" (203 mm)	13 $\frac{1}{2}$ " (343 mm)	7 $\frac{29}{32}$ " (201 mm)	7 $\frac{27}{32}$ " (199 mm)
10"	10" (254 mm)	16" (406 mm)	8 $\frac{29}{32}$ " (226 mm)	9 $\frac{3}{32}$ " (231 mm)
12"	11 $\frac{3}{4}$ " (299 mm)	19 $\frac{5}{16}$ " (491 mm)	11 $\frac{1}{4}$ " (286 mm)	10 $\frac{1}{4}$ " (260 mm)

Note: Raised faced flanges with smooth finish are standard.
For optional serrated raised faced flanges, consult factory.

All designs subject to change. Certified dimensions and specifications available upon request.

95021 Ordering Guide

Model Number Selection

The model number will consist of a base number **95021** followed by 6 digit numbers. These digits will represent 5 option tables.

95021 - A - BC - D - E - F

Specify:

1. Model 95021 Gauge Hatch
2. Size
3. Connection Type*
4. Clamping Cover Style
5. Material

6. Specify S-hook if required
7. Locking Option
8. ATEX Certification for II 1 G Ex h II B T1...T6 Ga EU Locations

*Note: Threaded adaptors and other connection types are available for all sizes. Please consult the factory for pricing and availability.

**Table A - Connection
(Mounting Flange)**

Option A	Description
0	ANSI-FF 150 lb. Bolted
1	ANSI-FF 150 lb. Undrilled
2	ANSI-RF 150 lb. Bolted
3	EN1092-1 PN16 FF Bolted
4	EN1092-1 PN16 RF* Bolted

Table BC - Size & Material

Table BC	Size	Material
4A	4"	Aluminum
4B		Steel
4C		316SS
6A	6"	Aluminum
6B		Steel
6C		316SS
8A	8"	Aluminum
8B		Steel
8C		316SS
0A	10"	Aluminum
0B		Steel
0C		316SS
1A	12"	Aluminum
1B		Steel
1C		316SS

Table D - Clamping Type

Option D	Description
0	Unclamped
1	Screw Down
2	Quick Clamp

Table E - Softgoods

Option E	Connection
0	FEP with Fiber Back-Up Disc
1	FEP with GPTFE Back-Up Disc
2	FKM (Back-Up Disc Not Required)
3	NBR (Back-Up Disc Not Required)
4	EPDM (Back-Up Disc Not Required)
5	TCF with GPTFE Back-Up (500 F Max)

Table F - Locking Provision

Option F	Body Material
0	Standard No Lock
1	Locking on Quick-Clamp / Screw Down
4	ATEX - No Lock
5	ATEX - Locking on Q-Clamp / Screw Down