

94061 FRP Conservation Vent

The Shand & Jurs model 94061 Conservation Vent is constructed of Fiberglass Reinforced Plastic (FRP). It has been designed for superior corrosion resistance in oxidizing environments. The 94061 is ideally suited for a variety of tank storage and product conservation applications. It is applicable for the chemical, petroleum, petrochemical and waste treatment industries. The closed vent design is available to pipe-away hazardous vapors not allowed to be readily released. The 94061 is available in following configurations: (1) pressure/vacuum (OPEN), (2) pressure/vacuum with pipe-away (CLOSED), (3) pressure only (open or closed) and (4) vacuum only (VACUUM). Its method of operation allows pallets in the vent housing to open and close permitting the vacuum or pressure relief necessary to remain within permissible settings thus avoiding damage to the tanks.

The weights are resin-coated lead. Available in 2" through 12" sizes with standard ANSI 125/150 lb or EN1092-1 PN10/16 flanges.

Construction options such as encapsulated weights and extra corrosion barriers allow for use in extremely corrosive environments such as 36% HCL.

The 94061 is easy to install and is completely compatible with existing pipes, vents and tank fittings. Its low initial cost and ease of maintenance make the FRP Conservation Vent an attractive alternative to Stainless Steel, Hastelloy and Monel construction.



Features

- One piece construction prevents product leakage
- Self Draining Housing prohibits condensate from seating surface
- Simple installation & maintenance
- Vent protection from freezing, binding and clogging
- Pipe-away relieves vapors through a flanged connection
- 470 Derakane standard, 411 Derakane and Furan available

Specifications:

Sizes:

2", 3", 4", 6", 8", 10" & 12"

Standard Pressure & Vacuum Setting:

1/2 oz./in.²

Flange:

To match drilling of ANSI 125/150 lb., EN1092-1 PN10/16.

Maximum Pressure/Vacuum Settings:

SIZE	MAXIMUM PRESSURE		MAXIMUM VACUUM
	OPEN VENT	CLOSED VENT	
2"	10 oz/in ²	8 oz/in ²	8 oz/in ²
3"	10 oz/in ²	10 oz/in ²	8 oz/in ²
4"	10 oz/in ²	10 oz/in ²	8 oz/in ²
6"	12 oz/in ²	12 oz/in ²	8 oz/in ²
8"	12 oz/in ²	12 oz/in ²	8 oz/in ²
10"	10 oz/in ²	10 oz/in ²	8 oz/in ²
12"	10 oz/in ²	10 oz/in ²	8 oz/in ²

Materials of Construction:

Body:

Fiberglass and choice of vinyl ester resins 411 or 470 Derakane. Furan also available.

External Hardware:

316 S.S. (Hastelloy "C" Optional)

Weights:

Resin-coated steel or lead. FRP Encapsulated steel or lead option.

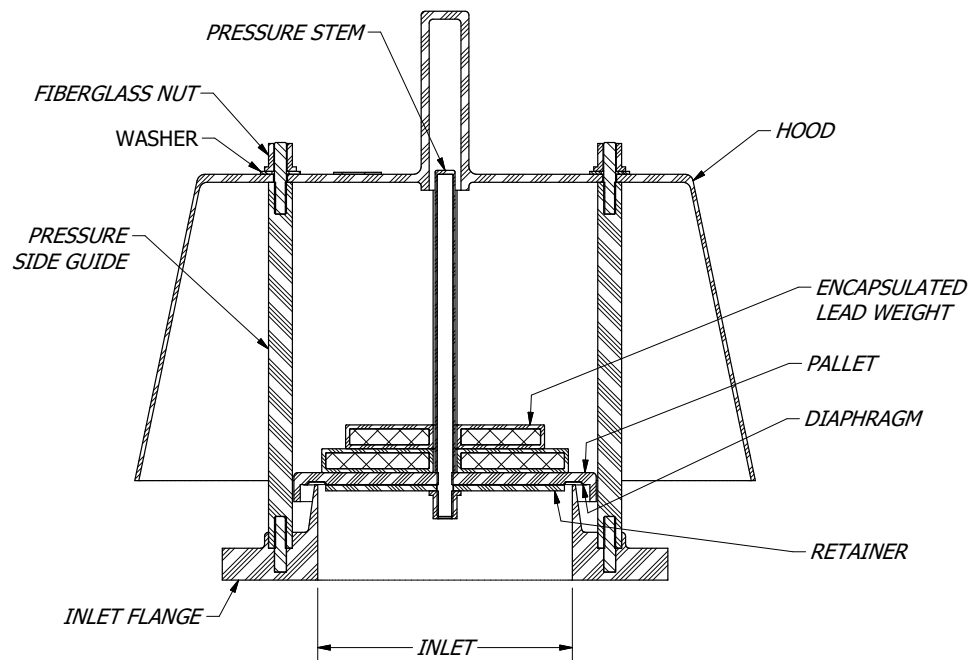
Internal Stem & Guides:

Same material as body

Diaphragm:

FEP Teflon

Closed Vent Assembly:



94061 Ordering Guide

Model Number Selection

The model number will consist of a base number **94061** followed by 6 digit numbers. These digits will represent 5 sets of option tables.

94061 - AB - CD - EF

Ordering Information

Specify:

1. Model 94061 Fiberglass Reinforced Plastic Conservation Vent
2. Type of Size
3. Type of Pressure and Vacuum Setting
4. Temperature Range
5. Flange Type

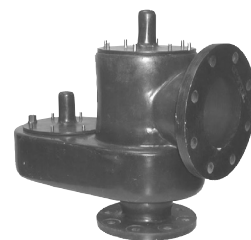


Table A - Size (Body & Flange)

Option A	Description
2	2"
3	3"
4	4"
6	6"
8	8"
0	10"
1	12"

Table B - Size (Body Material & Flange Type)

Option B	Body Material	Flange Type
A	Derakane 470 (316SS Studs)	ANSI-FF 150#
B	Derakane 470 (Hast "C" Studs)	ANSI-FF 150#
C	Derakane 411 (Hast "C" Studs)	ANSI-FF 150#
D	Furan (Hast"C" Studs)	ANSI-FF 150#
E	Derakane 470 (316SS Studs)	EN1092-1 PN16 FF
F	Derakane 470 (Hast "C" Studs)	EN1092-1 PN16 FF
G	Derakane 411 (Hast "C" Studs)	EN1092-1 PN16 FF
H	Furan (Hast"C" Studs)	EN1092-1 PN16 FF

Table C - Size of Pallet Assembly

Option C	Description
2	2"
3	3"
4	4"
6	6"
8	8"
0	10"
1	12"

Table D - Setting & Weight Type

Option D	Description
A	LOW / Encapsulated Lead
B	MED / Encapsulated Lead
C	HIGH / Encapsulated Lead

Table E - Options

Option F	Description
0	None
A	Polypropylene Vac. Screen