

### 94103 Static Pressure Vacuum Vent

The Shand & Jurs 94103 Static Pressure Vacuum Vent design has utilized over 90 years of experience in the development of quality safety and conservation fittings. This model is specifically designed to operate at high static pressures and at temperature ranges from minus 50 degrees to plus 200 degrees Fahrenheit. Provisions for high vacuum settings are provided.

Standard materials of construction are cast steel or cast stainless steel bodies with aluminum or stainless steel trim. The seat is cast aluminum or cast stainless steel to withstand high pressures. Standard NBR coated nylon diaphragm is cushion-seated for tighter sealing. Other materials are also available.

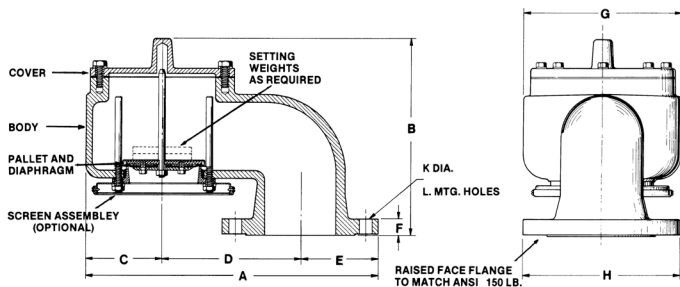
The 94103 Static Pressure Vacuum Vent is available only in a 4-inch size with raised face flange to match ANSI 150 LB. The body is self-draining and a drip ring keeps condensates from the seating surface. A unique feature is a special screen holder, which includes a stainless steel 30-mesh screen. Other design features include a peripheral and stem-guided vacuum pallet, designed primarily for high pressures and higher vacuum settings.



### Features

- Versatile
- High back pressure capability
- Reliable
- Rugged
- Meets U.S. Coast Guard requirements with Stainless Steel screen option

### Dimensions:



Vent Size	Table of Dimensions - Inches										Appr. Net Wt. lbs.	Appr. Shpg. Wt. lbs.	Box Size Inches
	"A"	"B"	"C"	"D"	"E"	"F"	"G"	"H"	"K"	"L"			
4"	17 3/8	11 1/4	4 5/8	8 1/4	4 1/2	1	9 1/4	9	3/4	8	64	69	21 x 14 x 15

All designs subject to change. Certified dimensions and specifications available upon request.

## Materials of Construction:

Type		Normal Service	Severe Service
Size		4 Inch	4 Inch
Trim		Aluminum	Stainless Steel
Vacuum Settings	Minimum (Standard)	1.0 oz./in. <sup>2</sup>	1.75 oz./in. <sup>2</sup>
	**Maximum	32 oz./in. <sup>2</sup>	32 oz./in. <sup>2</sup>
Temperature Range		-50°F to +200°F	
*Maximum Static Pressure		150 PSIG	
Body & Cover		Cast Steel	Cast Steel or Stainless Steel
Seat		Cast Steel	Cast Stainless Steel
Pallet, Screen Holder, Screen Cup and Support Plate		Aluminum	Stainless Steel
Screen		Galvanized Steel	Stainless Steel
Back-Up Disc, Cover Gasket & Spacer		N8090 Composite Nitrile Fiber	
Diaphragm		NBR Coated Nylon	
Pallet Guide and Stem		Stainless Steel	
Special Options		30 Mesh Stainless Steel Screen for U.S. Coast Guard Requirements	

Materials of construction for this equipment have been selected as representing the most suitable commercially available material for use in the service intended. However, they do not constitute a guarantee against corrosion since processes vary from plant to plant and concentration of harmful fluids, gases or solids vary from time to time in a given process. Empirical experience by users should be the final guide and alternate materials based on this are generally available.

\*\*See Vacuum Setting Table on Page 264

\*Recommended service pressure is 20 PSIG max. Available with CE certification for maximum service pressure of .5 barg. Consult Factory.

## Materials of Construction

	Normal Service Opt. 1 = 45 or 46	Severe Service Opt. 1 = 35 or 36	Severe Service Opt. 1 = 55 or 56
Body	Cast Steel LC-1	Cast Steel LC-1	Cast 316 Stainless Steel
Cover Plate	Cast Steel LC-1	Cast Steel LC-1	Cast 316 Stainless Steel
Seat	Cast Aluminum	Cast Stainless Steel	Cast 316 Stainless Steel
Pallet	Aluminum	Stainless Steel	316 Stainless Steel
Pallet Guide	Stainless Steel	Stainless Steel	316 Stainless Steel
Screen	Galvanized Wire	Stainless Steel	316 Stainless Steel
Support Plate	Aluminum	Stainless Steel	316 Stainless Steel
Retaining Plate	Aluminum	Aluminum	316 Stainless Steel
Stem	Stainless Steel	Stainless Steel	316 Stainless Steel
Diaphragm	BUNA N / Nylon	BUNA N / Nylon	BUNA N / Nylon
Back-up Disk	N8090	N8090	N8090
Spacer	N8090	N8090	N8090
Gaskets	N8090	N8090	N8090
Screen Holder	Aluminum	Stainless Steel	316 Stainless Steel
Screen Cup	Aluminum	Stainless Steel	316 Stainless Steel
Hardware	Stainless Steel	Stainless Steel	316 Stainless Steel

### 94103 Ordering Guide

#### Model Number Selection

The model number will consist of a base number **94103** followed by 4 digit numbers. These digits will represent 2 option tables.

**94103 - AB - CD**

#### Ordering Information

Specify:

1. Model 94103 Vacuum Vent
2. Material (Service Type)
3. Setting
4. Screen Type



#### Table AB - Material and Setting

Option AB	Material	Setting	Service
45	Cast Steel	Standard	Normal
46	Cast Steel	> 2 oz.	Normal
35	Cast Steel	Standard	Severe
36	Cast Steel	> 2 oz.	Severe
55	Stainless Steel	Standard	Severe
56	Stainless Steel	> 2 oz.	Severe

\* Max. Setting = 32 oz. (Lead loading Weights). Higher settings available.  
Stainless Steel Weights available by special request. Max. Settings 20 oz.

#### Table CD - Inlet Screen

Option CD	Description
02	Normal Service: 4-Mesh X 23 Gauge Galvanized Steel
03	Severe Service: 6-Mesh X 20 Gauge (.035) Stainless Steel
04	Coast Guard Stainless Steel: 30-Mesh to Comply with U.S. Coast Guard Requirement

#### Vacuum Settings in oz/in<sup>2</sup>

Minimum	Standard Maximum	Maximum with Vacuum Extension
1.0 (Aluminum Trim)	16.0 (Lead Weights)	32.0 (Lead Weight)
1.75 (SS Trim)	12.0 (SS Weights)	20.0 (SS Weight)