

evo 1650 Smart Core

Complete Control

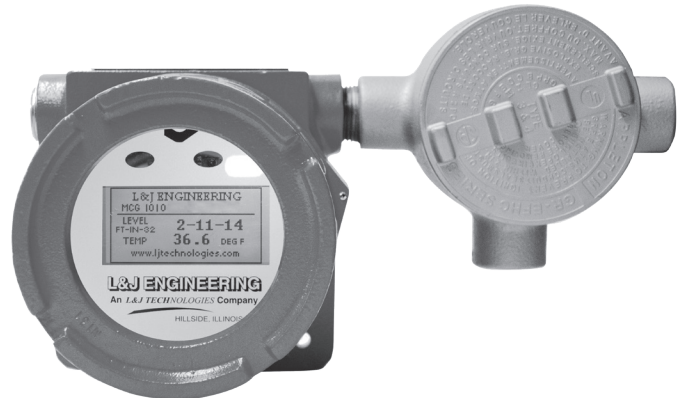
The evo 1650 Smart Core is an extremely flexible microprocessor based RTU / Tank Hub. This device allows you to monitor a local Foundation Fieldbus device at your tank and display its information right at tank side. It will also allow you to connect a myriad of accessories including 3-Wire RTD Spot Temperature Probes, MCG 351 Average Temperature Probes via the MCG 2350, 4-20ma input devices and take discrete inputs.

Compatibility

In addition to transmitting all of the information from these devices via Foundation Fieldbus to your control room, the unit can also convert this information to any number of industry standard protocols, including but not limited to: L&J Tankway, Modbus, Profibus, HART, WirelessHART.

Graphical LCD Display w/ Infrared Calibration

The evo 1650 Smart Core utilizes local graphical LCD display which has the ability to display a multitude of technical information. The Smart Core is programmed with the MCG 2150 Remote Calibrator without having to remove the housing covers in hazardous environments.



Features

- Reliable Interface between Fieldbus Devices and Digital Protocols
- Analog to Digital Conversion
- Monitor Field / Internal Parameters
- Wireless Infrared Programming
- Local Graphical LCD Display

Applications

- Converts Foundation Fieldbus devices to other digital protocols
- Ground Level Display for evo 1610 Radar Level Gauge

Specifications

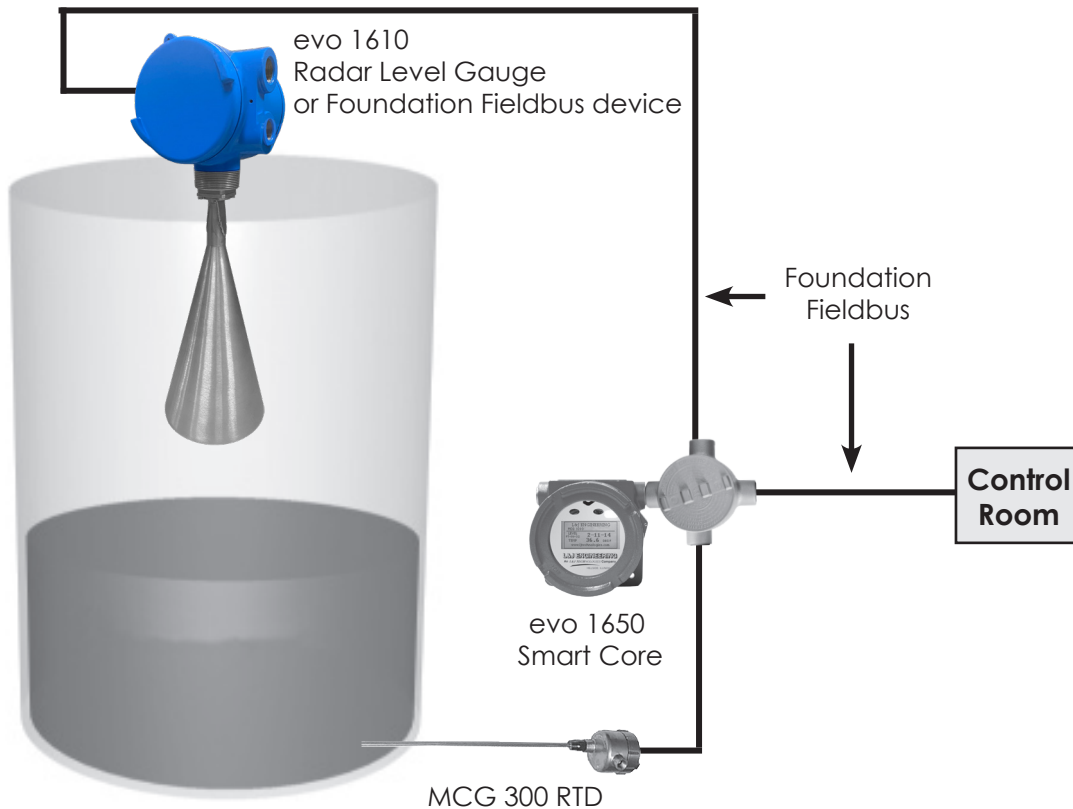
Display:
Graphical LCD Display

Weight:
5 lbs.

Programming:
Infrared, Foundation Fieldbus

Voltage:
9-32 VDC

Typical System Layout



All designs subject to change. Certified dimensions and specifications available upon request.

evo 1650M Ordering Guide

evo 1650 Smart Core

Includes: Explosion Proof Housing, Infrared Remote Capabilities, Local Graphical LCD Display.

MCG 2150 Remote Calibrator

(One Required)

Model Number Selection:

The model number will consist of a base number **evo 1650** followed by 5 digit letters. These digits will represent 7 option tables:

evo 1650 - A - B - C - D - E

A – Temperature	
0	None
1	Spot Temperature
2	Average Temperature

B – Analog Inputs	
0	None
1	4-20mA Single

C – Signal Outputs	
0	None
1	L&J Tankway
2	4-20 mA Output
3	GPE 31422, 31423
4	Varec 4-Wire
5	RS-232 Output
6	Modbus on RS-485 (2-Wire)
7	Modbus on L&J Tankway
8	Modbus on RS-485 (4-Wire)
9	Enraf
A	Ti-Way Interface
B	TRL/2
C	WirelessHART
D	Profibus DP

D – Relays	
0	None
1	1 Relay Out
2	2 Relay Outs

E – Discrete Inputs	
0	None
1	Single Discrete Input
2	Dual Discrete Input