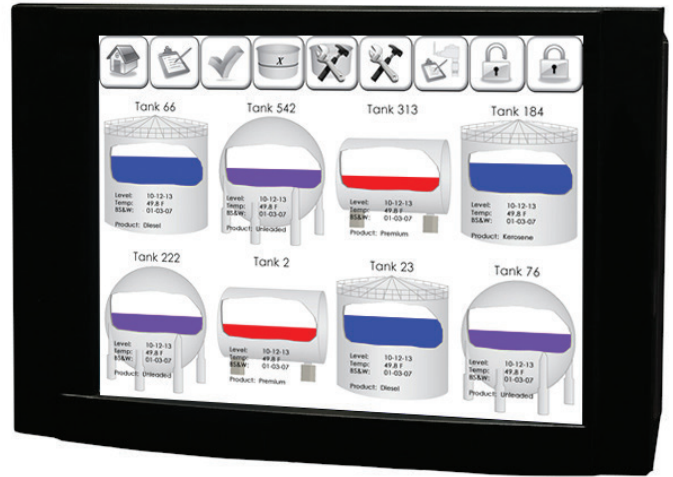


MCG 3630 Touch Panel Tank Monitor

L&J Engineering's MCG 3630 Touch Panel Tank Monitor provides field polling support for level, temperature, BS&W and density. It displays information as text or in graphical format in bar graphs for multiple tanks. The MCG 3630 provides a touchscreen selectable system allowing the user to set gauge address, enable tanks for polling and scale factors for graphs.

The MCG 3630 supports any current or future protocol with its flexible design. The standard option includes L&J Tankway wiring and communication. The system also supports host communication back to a central control computer with tank level, temperature, BS&W and density.



Real Time



The Real Time page provides the end user with a snapshot display of the pertinent information for each tank in your system that is connected to the MCG 3630. It includes a bar graph that shows the tank level relative to your user defined maximum fill level which will flash with different colors if you begin to approach your high level alarm setpoint. There is an arrow which will show you your tank movement, up or down, or no arrow for an idle tank. There is a text display box which will show the current level of the product, the volume of the product, the temperature of the product, and the product name. This displays is also customizable based upon the end user's needs.

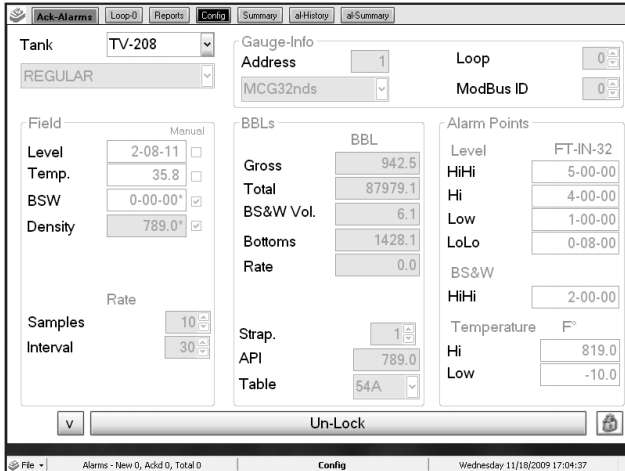
Features

- Displays Level, Temperature, BS&W and Density from Multiple Tanks
- Touch Screen User Input
- Wireless Option Available
- Multi-Protocol Compatible
- Supports Host Communication

Applications

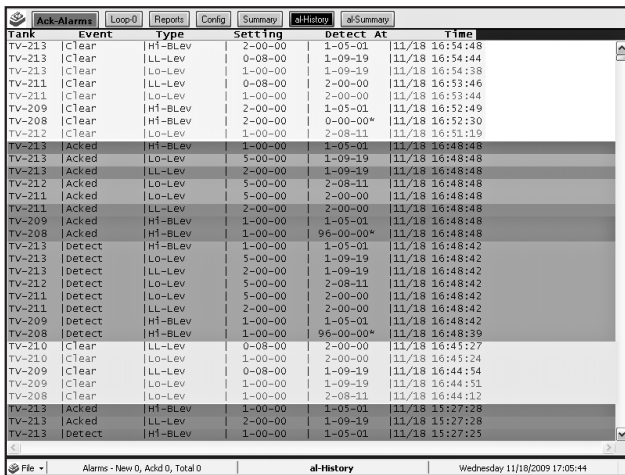
Petroleum	Refineries	Pharmaceutical
Petrochemical	Chemical	Food & Beverage
Water Treatment	Bulk Liquid Storage	Process Applications

Tank Configuration:



The Tank Configuration page is where all of the configuration is done for each tank/level gauge. This is where you will set the Tank Number, Address, Loop Number, Modbus ID, Communication Protocol, and Product Name. You are also able to easily set all of your Alarm Set-Points from this page as well for both level, temperature, and BS&W.

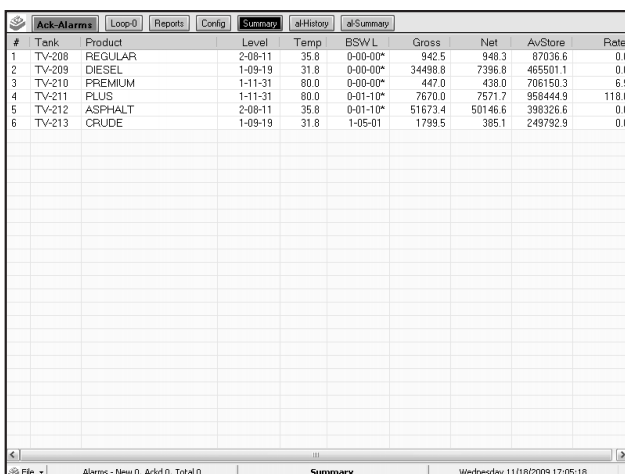
Alarm History:



Tank	Event	Type	Setting	Detect At	Time
TV-213	Clear	HI-BLev	2-00-00	1-05-01	11/18 16:54:48
TV-213	Clear	LL-Lev	0-08-00	1-09-19	11/18 16:54:44
TV-213	Clear	LO-Lev	1-00-00	1-09-19	11/18 16:54:38
TV-211	Clear	LL-Lev	0-08-00	2-00-00	11/18 16:53:46
TV-211	Clear	LO-Lev	1-00-00	2-00-00	11/18 16:53:44
TV-209	Clear	HI-BLev	2-00-00	1-05-01	11/18 16:52:49
TV-208	Clear	HI-BLev	2-00-00	0-00-00*	11/18 16:52:30
TV-212	Clear	LO-Lev	1-00-00	2-08-11	11/18 16:52:19
TV-213	Acked	HI-BLev	1-00-00	1-05-01	11/18 16:48:48
TV-213	Acked	LO-Lev	5-00-00	1-09-19	11/18 16:48:48
TV-213	Acked	LL-Lev	2-00-00	1-09-19	11/18 16:48:48
TV-212	Acked	LO-Lev	5-00-00	2-08-11	11/18 16:48:48
TV-211	Acked	LO-Lev	1-00-00	2-00-00	11/18 16:48:48
TV-211	Acked	LL-Lev	2-00-00	2-00-00	11/18 16:48:48
TV-209	Acked	HI-BLev	1-00-00	1-05-01	11/18 16:48:48
TV-208	Acked	HI-BLev	1-00-00	96-00-00*	11/18 16:48:48
TV-213	Detect	HI-BLev	1-00-00	1-05-01	11/18 16:48:42
TV-213	Detect	LO-Lev	5-00-00	1-09-19	11/18 16:48:42
TV-213	Detect	LL-Lev	2-00-00	1-09-19	11/18 16:48:42
TV-212	Detect	LO-Lev	5-00-00	2-08-11	11/18 16:48:42
TV-211	Detect	LO-Lev	5-00-00	2-00-00	11/18 16:48:42
TV-211	Detect	LL-Lev	2-00-00	2-00-00	11/18 16:48:42
TV-209	Detect	HI-BLev	1-00-00	1-05-01	11/18 16:48:42
TV-208	Detect	HI-BLev	1-00-00	96-00-00*	11/18 16:48:39
TV-210	Clear	LL-Lev	0-08-00	2-00-00	11/18 16:45:27
TV-210	Clear	LO-Lev	1-00-00	2-00-00	11/18 16:45:24
TV-209	Clear	LL-Lev	0-08-00	1-09-19	11/18 16:44:54
TV-209	Clear	LO-Lev	1-00-00	1-09-19	11/18 16:44:51
TV-208	Clear	LO-Lev	1-00-00	2-08-11	11/18 16:44:12
TV-213	Acked	HI-BLev	1-00-00	1-05-01	11/18 15:27:28
TV-213	Acked	LL-Lev	2-00-00	1-09-19	11/18 15:27:28
TV-213	Acked	HI-BLev	1-00-00	1-05-01	11/18 15:27:25

The Alarm History page give you a running history of the different types of alarms that have occurred. The default information displayed in the alarm history listing is the following: Tank Number, Event Type, Product Type, Alarm Setting, Alarm Detection, Time and Date. The information displayed on this page is also completely customizable based upon the end user's requirements.

Tank Summary:



#	Tank	Product	Level	Temp	BSWL	Gross	Net	AvStore	Rate
1	TV-208	REGULAR	2-08-11	35.8	0-00-00*	942.5	948.3	87036.6	0.0
2	TV-209	DIESEL	1-09-19	31.8	0-00-00*	34498.8	7396.8	465501.1	0.0
3	TV-210	PREMIUM	1-11-31	80.0	0-00-00*	447.0	438.0	706150.3	6.9
4	TV-211	PLUS	1-11-31	80.0	0-01-10*	7670.0	7571.7	958444.9	118.0
5	TV-212	ASPHALT	2-08-11	35.8	0-01-10*	51673.4	50146.6	398326.6	0.0
6	TV-213	CRUDE	1-09-19	31.8	1-05-01	1799.5	385.1	249792.9	0.0

The Tank Summary page gives you a text listing of the information of all of the tanks in your system. Information such as: Tank Number, Product, Level, Temperature, BS&W, Gross Volume, Net Volume, Available Storage, and Rate is shown in a text based format in this screen.

MCG 3630 Ordering Guide

MCG 3630 Touch Panel Tank Monitor

Includes: Touchscreen LCD, Tank Level in Feet, Inches and 1/16 or Feet and .01 Feet, Tank Temperature, Monitors up to 10 Tanks (expandable up to 100 tanks), calculates temperature compensated net volume using strapping tables.

Model Number Selection:

The model number will consist of a base number **MCG 3630** followed by 6 digits. These digits will represent 5 sets of option tables:

MCG 3630 - A - B - C - D - E - F

A - Field Communication	
0	None
1	L&J Tankway
2	L&J Tankway (Includes MCG 3281 Mini Field Interface)
3	Modbus on RS-485 (2-Wire)
4	Wireless (Includes MCG 5102)

B - Remote Communication	
0	No Remote Communication
1	Modbus on RS-232
2	Modbus on RS-485
3	Modbus over Ethernet
4	MCG 3900 Client

C - Reporting	
0	No Printed Reports
1	Printed Reports (Includes 8.5x11 Inkjet Printer)
2	Printed Reports (Includes 32 Character Thermal Printer)

D - Max Tank Capacity	
0	10 Tanks
1	50 Tanks
3	100 Tanks

E - Power Supply	
1	110 VAC
2	220 VAC

F - Relay Contacts	
0	No Relays
1	4 Relay Contacts
2	8 Relay Contacts

All designs subject to change. Certified dimensions and specifications available upon request.