

97110 Automatic Drip Trap

The S&J 97110 Automatic Drip Trap provides for the continuous, safe removal of condensate from low points in low pressure gas piping systems. Removing condensed liquid protects the piping and equipment from corrosion and "water hammer" damage.

The unit collects liquid until the float lifts the stopper valve off of its seat and begins to drain the liquid. As the level drops, the float rotates the stopper valve back into its seat and provides a tight seal. A liquid level is always maintained above the outlet while the unit is draining which prevents any release of gas.

High and low pressure rated units allow for use in any low area of the digester gas system. Available with a 2 or 4 quart capacity and with 1" NPT inlets and outlets, the S&J 97110 adapts to any condensation or drainage collection requirement.

Its aluminum and stainless steel components withstand the severest of process environments. The S&J 97110 is especially designed for hydrogen sulfide and hot, wet methane which are the main components of digester gas streams in municipal waste water treatment facilities.

Specifications:

Body Material:

Aluminum or 316 Stainless Steel

Internals:

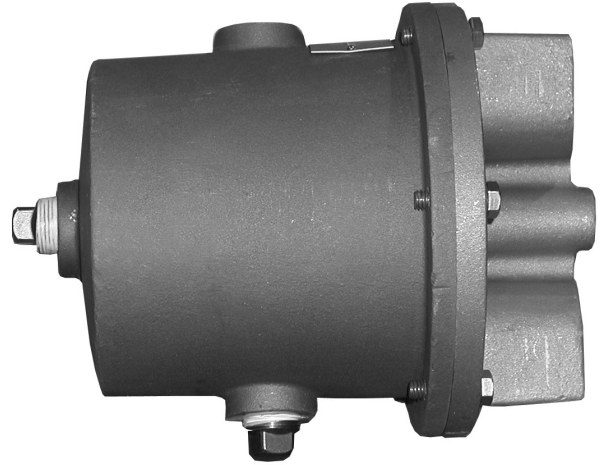
304/316 Stainless Steel; NBR (Nitrile-Butadiene)

Working Pressure:

5 PSIG or 25 PSIG

Capacity:

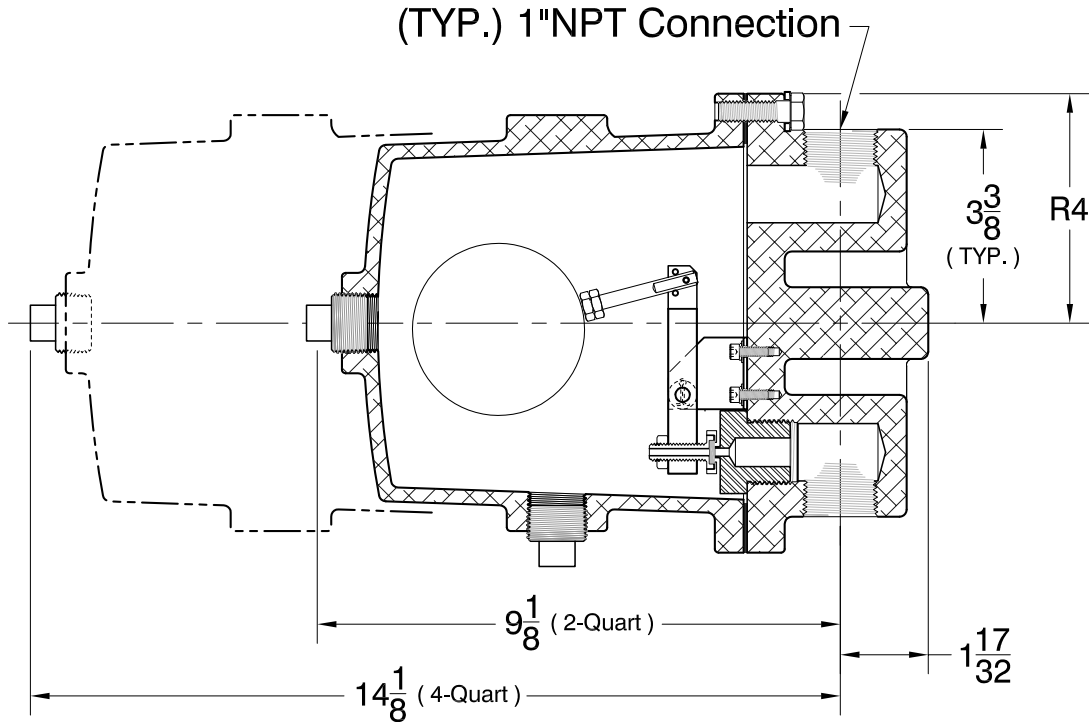
2 Quart or 4 Quart



Features

- Positive Gas Shut-off While Draining
- 5 PSI Standard; 25 PSI Pressure Available
- Automatic Unattended Removal of Condensate
- 2 or 4 Quart Capacity
- Provided with 1" NPT Inlet and Outlet Connect

Dimensions:



All designs subject to change. Certified dimensions and specifications available upon request.

97110 Ordering Guide

Model Number Selection

The model number will have a base number **97110** followed by 2 digit numbers. These digits will represent an option table.

97110 - AB

Table AB - Maximum Working Pressure & Material

Option AB	Capacity	Maximum Working Pressure	Body Material
11	2 Quart	5 PSIG	Aluminum
12			316 Stainless Steel
21		25 PSIG	Aluminum
22			316 Stainless Steel
31	4 Quart	5 PSIG	Aluminum
32			316 Stainless Steel
41		25 PSIG	Aluminum
42			316 Stainless Steel

NOTE: 316 Stainless Steel Hardware, 304 Stainless Steel Float, NBR Seal Standard. Alternate Materials of construction available.