

97100 Manual Drip Trap

The S&J 97100 Manual Drip Trap provides for the continuous, safe removal of condensate from low points in low pressure gas piping systems. Removing condensed liquid protects the piping and equipment from corrosion and “water hammer” damage.

The unit collects liquid until the ported rotating disc valve is manually opened. The valve seals the gas port prior to opening the drain port allowing for removal of condensate without gas escaping. The 97100 also can be provided with an optional air inlet and / or insulation jacket.

Available in either 3 or 6 quart sizes and with 1” NPT inlets and outlets, the S&J 97100 adapts to any condensation or drainage collection requirement. Its aluminum and stainless steel components withstand the severest of process environments. High and low pressure rated units allow for use in any low area of the digester gas system.

An optional timer controlled electronic actuator is available which will automatically drain the trap at a given time interval. The electronics for the timer are available in an explosion proof enclosure. Please see the 97100E for more information on the electrically actuated drip trap.



Features

- Positive Gas Shut-off While Draining
- Operated Manually
- 5 PSI or 25 PSI Pressures Available
- 3 or 6 Quart Capacities
- Internal Parts and Hardware Stainless Steel - Standard
- Air Inlet and Insulation Jackets available

97100 Manual Drip Trap



Specifications:

Available Sizes/Capacity

3 Quart, 6 Quart

Inlet/Outlet Connections

1" NPT

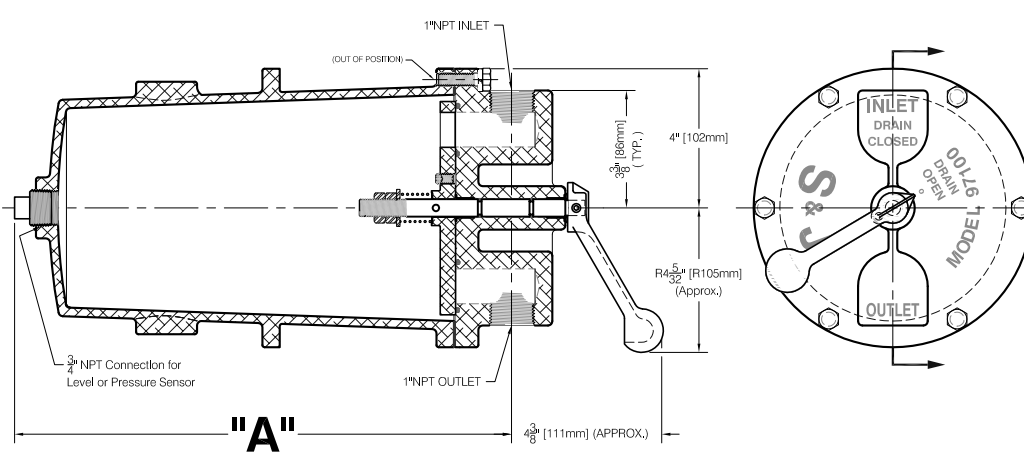
Materials of Construction

Aluminum handle, Stainless Steel Internals & Hardware
Aluminum, 304 Stainless Steel, 316 Stainless Steel
Body and Cover Options
NBR (Nitrile-Butadiene) or CR = Chloroprene (Neoprene)

Maximum Working Pressure

5 or 25 PSIG

Dimensions:



Size	Dimensions A (Inches [mm])
3 Quart	9 1/8" [232]
6 Quart	14 1/8" [359]

All designs subject to change. Certified dimensions and specifications available upon request.

97100 Ordering Guide

Model Number Selection

The model number will have a base number **97100** followed by 4 digit numbers. These digits will represent 4 sets of option tables.

97100 - AB - CD

Table A - Capacity/MAWP

Option A	Capacity	MAWP
3	3 Quart	5 PSIG
6	6 Quart	
4	3 Quart	25 PSIG
7	6 Quart	

Table C - Softgoods

Option C	Softgoods
0	NBR
1	CR

Table B - Body Material

Option B	Material
2	Aluminum
3	Aluminum w/ Anodized Disc/Cover
4	Aluminum w/ Anodized Disc/Cover/Body
5	304 Stainless Steel
6	316 Stainless Steel

Table D - Options

Option D	Options
0	None
1	Insulation Jacket
2	Air Inlet
3	Air Inlet with Insulation Jacket

