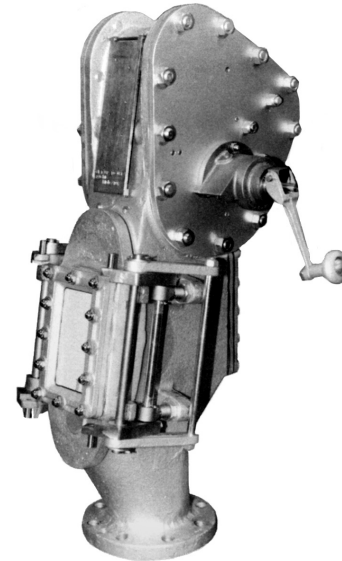


93376 Semi-Automatic Tank Gauge and Sampling Lock

The Shand & Jurs Model 93376 Semi-Automatic Tank Gauge and Sampling Lock has been designed as an intermediate step between hand gauging and fully automatic tank gauging. The inherent inaccuracy of hand gauges has led to the design of this tank gauge, which entirely eliminates the human element in the sequence of lowering the tape and bob to the bottom of the tank in order to obtain an "innage" reading.

In this gauge, a hollow bob is used in place of the conventional plump bob. A spring mechanism is adjusted against the weight of the hollow bob so that when the bob touches the tank bottom or datum plate, payout of the tape is automatically stopped and the tape is kept under constant tension, preventing tipping of the bob or overshooting the gauge. By substituting a sampling bob for the hollow bob and locking the spring mechanism, the device becomes a sampling lock.

The Model 93376 is available in cast steel (for working pressures up to 125 lbs.) Other materials are available upon request. A rubber plug closure valve, which can be closed on the gauge tape, is used between the gauge and the tank to isolate the gauge head from the tank vapor space during gauging operations. A gate valve under the rubber plug closure valve is recommended for all working pressures above 10 lbs., to permit inspection of the unit.



Features

- Intermediate step between hand gauging and fully automatic tank gauging
- Unique tension feature allows for accurate reading of product
- May be used for sampling and temperature thieving

Ordering Information

Specify:

1. Model 93376 DLB Gauge
2. Gauging Height
3. Working Pressure
4. Iron or Steel Body
5. Product to be stored
6. If Gate Valve is Desired
7. If Closure is Desired
8. If The Hollow Bob or Sampling Bomb is Desired

Accessories

Model Number	Description	Used With
JB3401-2*	Hollow Bob	93376
JB3404-1	Surface Indicator	93376

* Replace Model 93401-2

Option Number	Description
93376-01000	Gauge Only
93376-01001	Gauge w/ Tape, HB, SB, PV
93376-01002	Gauge w/ Tape, HB, SB, Special PV
93376-01003	Gauge w/ Tape, HB
93376-01004	Gauge w/ Tape, HB, SB
93376-01005	Gauge w/ Tape, SB

Codes:
 Tape = Tape Assembly
 HB = Hollow Bob
 SB = Sampling Bomb
 PV = Pinch Valve
 Special = Special Modifications

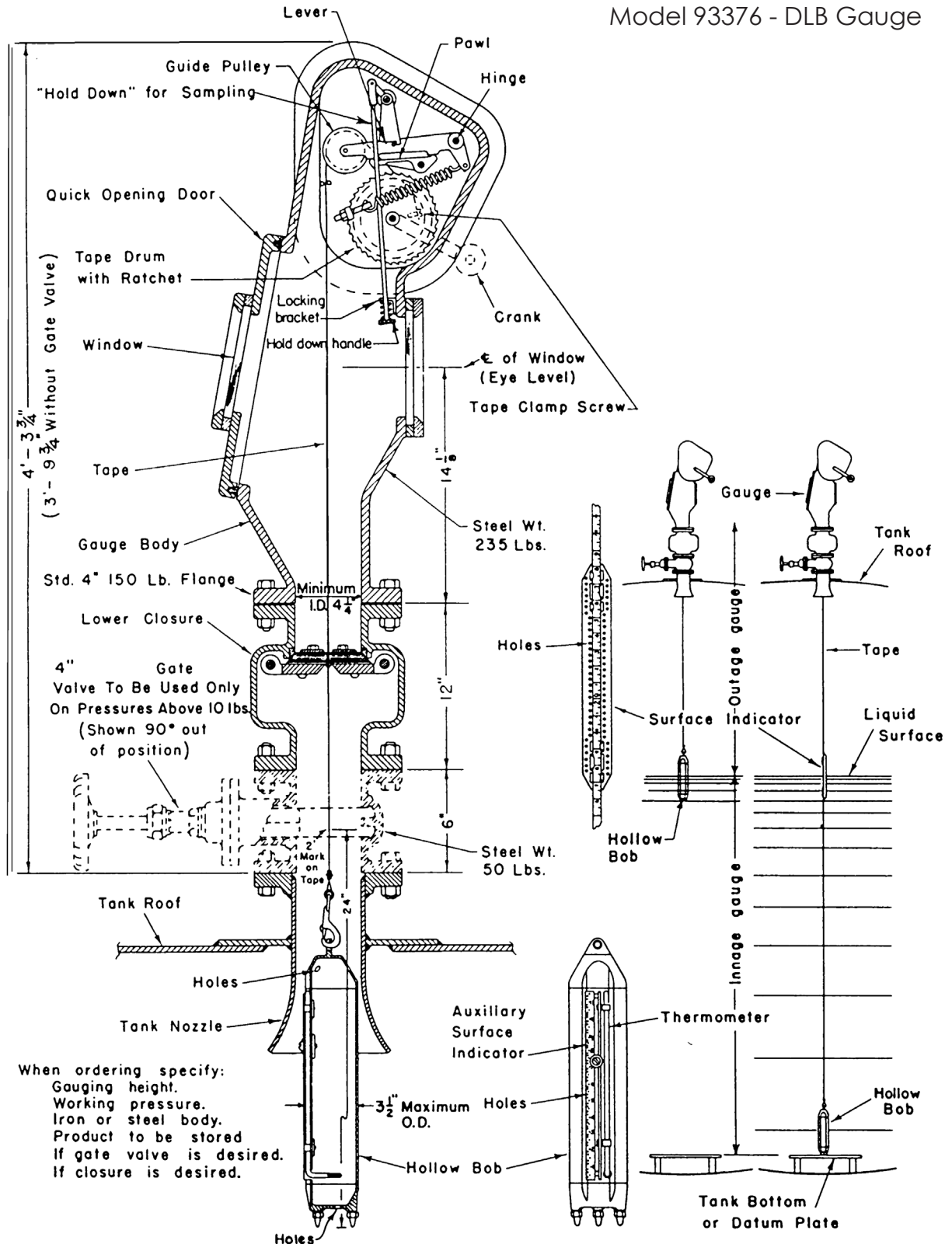
93376

Semi-Automatic Tank Gauge & Sampling Lock

SHAND & JUR'S

Dimensions:

Model 93376 - DLB Gauge



All designs subject to change. Certified dimensions and specifications available upon request.

SHAND & JUR'S

5911 Butterfield Road Hillside, IL 60162 • tel: (708) 236-6000 • fax: (708) 236-6006
 sales@ljtechnologies.com • www.ljtechnologies.com • ISO 9001: 2008 Certified

Rev: 93376-3B