



- Positive Emergency Shutoff
- Valve Closed Indicator Rod
- 255° F Fusible Link
- Sizes 2" Through 12"

The Shand & Jurs Model 97130 Thermal Valve

The S&J 97130 Thermal Valve is a thermally operated shut-off valve typically located in low pressure biogas lines such as downstream of anaerobic digesters, landfills and lagoons or upstream of flares and waste gas burners.

Its normal operating position is open until the melting point of the fusible element is exceeded. When the line temperature reaches 255° F, which is usually in the presence of fires and flame propagation, the fusible element melts causing the spring loaded pallet to positively shut off gas flow and prevent the fire from continuing. Indicator Rod provides notification of valve actuated to the closed position. Fusible element is easily replaceable without disassembling the valve.

This unit can be used alone, but its most common application is as a component in item number 97140/97141, Flame Trap Assembly.

Its aluminum and stainless steel components withstand the severest of process environments. The S&J 97130 is especially designed for hydrogen sulfide and hot, wet methane which are the main components of digester gas streams in municipal waste water treatment facilities.

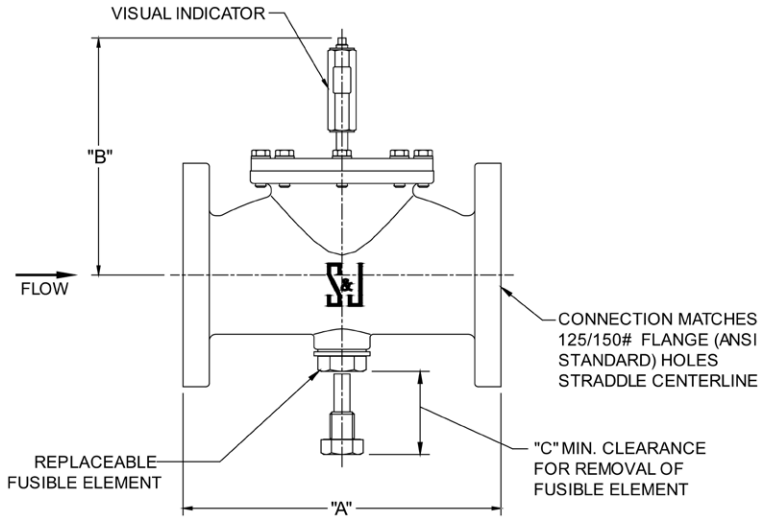
Standard materials of construction include low copper cast aluminum body and pallet with stainless steel spring and stem. The 97130 is 100% U.S. made.

Applications

- Anaerobic digester gas train**
- Fermentation off gas piping systems**
- Low pressure vent lines**

DIMENSIONS

| LINE DIAMETER | "A" | "B" | "C" |
|---------------|-----------|---------|--------|
| 2" | 8 3/4" | 8 7/8" | 2" |
| 3" | 10" | 9 1/2" | 2" |
| 4" | 11 3/8" | 9 1/2" | 2" |
| 6" | 15" | 11 7/8" | 4" |
| 8" | 22 1/4" | 13 7/8" | 5 1/2" |
| 10" | 27 13/16" | 14 7/8" | 5 1/2" |
| 12" | 33" | 20 1/2" | 8" |



AIR FLOW CAPACITY IN STANDARD CUBIC FEET PER HOUR x 1000 @ 60°F

| Pressure Inches W.C. | Line Diameter | | | | | | |
|-------------------------|---------------|------|------|------|------|------|-----|
| | 2" | 3" | 4" | 6" | 8" | 10" | 12" |
| 1 | 1.2 | 3.1 | 6 | 13.1 | 25.4 | 39.1 | 55 |
| 2 | 1.7 | 4.3 | 8.7 | 19.6 | 36.4 | 60.0 | 92 |
| 3 | 2.3 | 5.5 | 10.9 | 24.1 | 46 | 74.2 | 114 |
| 4 | 2.8 | 6.6 | 12.5 | 28.0 | 53 | 88.0 | 134 |
| 5 | 3.2 | 7.4 | 14.3 | 31.6 | 61 | 98.5 | 156 |
| 6 | 3.7 | 8.1 | 15.8 | 34.6 | 67 | 108 | 170 |
| 7 | 4 | 8.8 | 17.3 | 37.8 | 73 | 116 | 182 |
| 8 | 4.4 | 9.5 | 18.2 | 40.6 | 78 | 125 | 197 |
| 9 | 4.6 | 10.2 | 19.5 | 43.1 | 85 | 134 | 210 |
| 10 | 4.9 | 10.8 | 20.6 | 45.7 | 91 | 141 | 220 |
| 11 | 5.1 | 11.4 | 21.5 | 48.5 | 97 | 148 | 230 |
| 12 | 5.3 | 11.8 | 22.7 | 50.4 | 101 | 155 | 240 |
| 13 | 5.5 | 12.3 | 23.7 | 52.7 | 106 | 162 | 248 |
| 14 | 5.8 | 12.8 | 24.3 | 54.6 | 110 | 168 | 256 |
| 15 | 6 | 13.2 | 25.2 | 56.5 | 115 | 173 | 264 |
| 16 | 6.3 | 13.8 | 26 | 58.7 | 119 | 178 | 270 |
| 17 | 6.5 | 14.3 | 26.6 | 60.3 | 122 | 182 | 275 |
| 18 | 6.7 | 14.6 | 27.2 | 62.3 | 125 | 186 | 280 |
| 19 | 6.8 | 15.1 | 27.8 | 64.1 | 128 | 189 | 285 |
| 20 | 7 | 15.6 | 28.5 | 65.7 | 131 | 193 | 290 |

HOW TO ORDER

97130 - AB - C - D

Line Size _____ Mounting _____
 _____ Material _____

| | | |
|---|--|--|
| <p>(AB) Line Size</p> <p>02 = 2" 03 = 3" 04 = 4" 06 = 6" 08 = 8" 10 = 10" 12 = 12"</p> | <p>(C) Material</p> <p>1 = Aluminum</p> | <p>(D) Mounting</p> <p>0 = Horizontal (Std.) 1 = Vertical with Drain Plugs</p> |
|---|--|--|

Design subject to change without notice