



- Easy access to storage tanks for maintenance and inspection
- 12", 16", 20", 24", 30", 36" and 48" sizes
- ANSI, API, DIN, and other connection types available
- Threaded clamping handle provides gas-tight and watertight seal
- Maximum working pressure of 3 psig (12"-24" sizes), 1 psig (30", 36" and 48" sizes)
- Materials of construction include aluminum, steel & 316SS

## The Shand & Jurs Model 95210 Clamping Manhole Cover

The Shand & Jurs Model 95210 Clamping Manhole Cover is designed as an economical solution that provides ready access to product storage tanks by means of an easily opened hinged cover.

The design of the model 95210 employs a threaded clamping handle along with a flexible seal, affording a tight seal between the pallet and the corrosion resistant seat. This feature minimizes vapor leakage and provides for a watertight seal.

All sizes have flat face, drilled flanges. An undrilled flange version and other special construction types are also available.

For tank gauging, access or examination, the entire hinged cover may be lifted open in a matter of seconds offering clear passage through the unobstructed opening.

The Model 95210 is 100% U.S. made.

**MATERIALS OF CONSTRUCTION:**

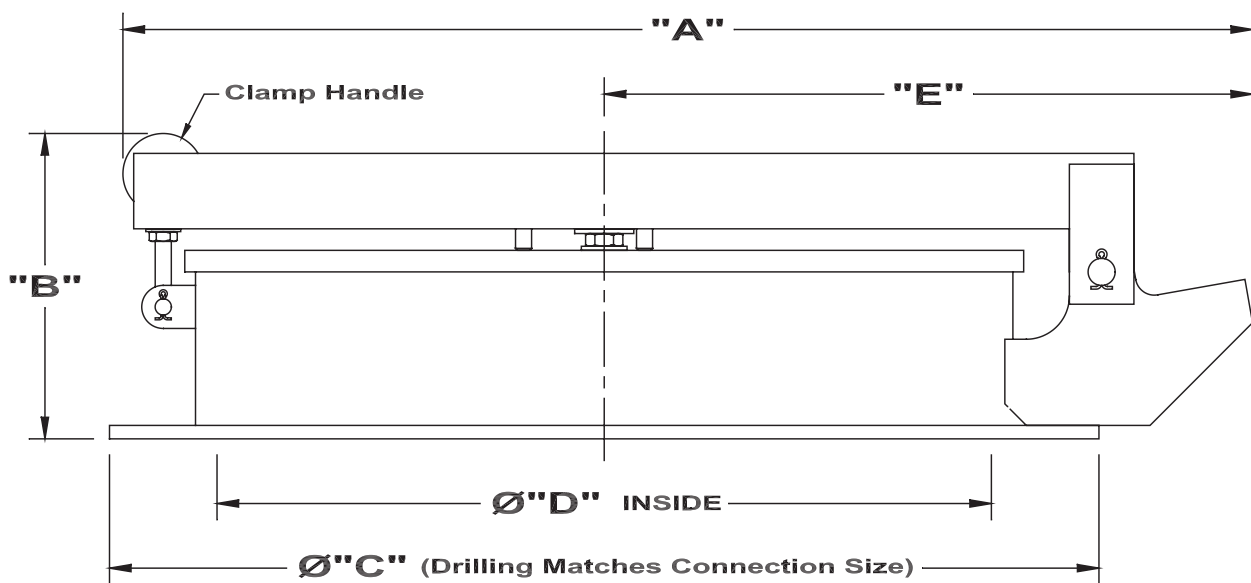
Base: ..... Aluminum, Steel, or 316 SS

Cover: ..... Aluminum, Steel, or 316 SS

Seal: ..... Buna-N (Standard)  
 Other available

Clamping Hardware: ..... STL (Standard), Al, Brass, SS

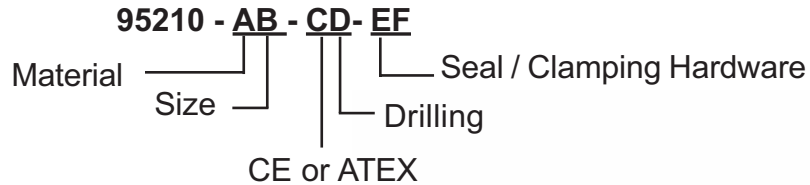
Size	A	B	C	D	E	Flange Fits
12"	21-1/2	7-5/8	19	12	11	ANSI 125, 150
16"	29-9/16	9-15/16	23-1/2	16	13-5/8	
20"	37-1/16	13-1/2	26	20	17-15/16	API Roof Manhole
24"	41-1/4	13-1/2	30	24	19-13/16	
20"	37 1/16	13 1/2	27 1/2	20	17 15/16	ANSI 125, 150
24"	41 1/4	13 1/2	32	24	19 13/16	
30"	47-1/4	13-1/2	38 3/4	30	21-13/16	ANSI 125
36"	53-1/4	13-1/2	46	36	24-13/16	
48"	N/A	10-1/8	59-1/2	47-1/4	29-3/4	



All designs subject to change. Certified dimensions and specifications available upon request

**MODEL NUMBER SELECTION:**

The model number will consist of a base number 95210 followed by 2 digit numbers which represent the options listed in the following tables.



**ORDERING INFORMATION**

Specify:

1. Model 95210 Clamping Manhole Cover
2. Size Required
3. Material
4. Connection Type
5. Type of Product Stored
6. For Other than Standard Materials, Specify as Required
7. Specify CE for Ordinary EU Locations use Table C1
8. ATEX Certification for Group IIB, IIA EU Locations, use Table C2



**TABLE I - (AB) SIZE & MATERIAL**

SIZE INCHES	OPTION # ALUM. BASE	OPTION # STEEL BASE	OPTION # 316 SS BASE
16	01	11	21
20	02	12	22
24	03	13	23
30	04	14	24
36	05	15	25
12	06	16	26
48	07	17	27
18	08	18	28

**TABLE II - (C) CE or ATEX**

OPTION #	DESCRIPTION
0	STANDARD
1	CE
2	ATEX CERTIFIED

**TABLE II - (D) DRILLING**

OPTION #	DRILLING
1	API*
2	ANSI (125/150 lb. FF)
3	NOT DRILLED (WELD)
9	OTHER***

\* 20" and 24" sizes only.

\*\*\* Consult Factory for Non-Standard Pattern

**TABLE III - (EF) SEAL / CLAMPING HARDWARE**

OPTION "E"	SEAL
0	NEOPRENE
1	BUNA

OPTION "F"	CLAMPING HARDWARE
0 **	STL
1	BRASS
2	SS

\*\*F = 0 NOT AVAILABLE ON ATEX MODELS