

- Magnetic latching eliminates expensive loading weights
- Instantaneous opening at set pressure, no overpressure required
- Unique diaphragm construction assures tight seal between pallet and seat
- 20" opening provides for clear passage when used as a manhole

**The Shand & Jurs Model 94520 Emergency Pressure Vent & Manhole Cover**

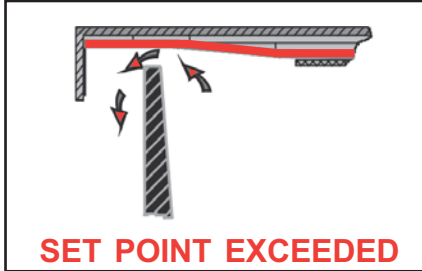
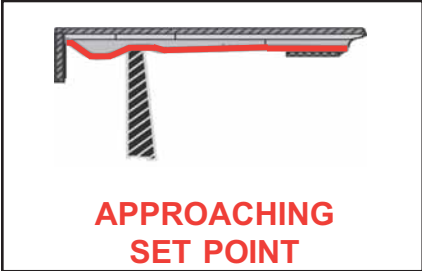
The Shand & Jurs Model 94520 Emergency Vent provides emergency venting and manhole requirements, where intermediate pressure relief beyond that provided by tank breather vents is required. This vent is not intended to meet requirements of explosion relief, but is designed to relieve excessive internal pressure. It is a economical solution to costly and dangerous tank roof rupture problems.

The Model 94520 is available in 10", 16" and 20" sizes and is designed to utilize a patented, magnetic latch system, which provides greater flow capacities than conventional weight loaded vents. It also provides for 100% opening at set pressure with no overpressure required. The magnetic latching principle eliminates hundred of pounds of loading weights required by conventionally loaded vents. The vent is tightly latched utilizing permanent

magnets, which are mounted to the vent cover and act on a magnetic stainless steel plate on the vent base. As the pressure increases, the magnetic attraction between the base and cover remains constant, until the set pressure is reached. The setting is determined by the size and strength of the magnets.

Since the force required to overcome the magnets is much greater than the force (or pressure) required to support the lightweight cover, the vent immediately goes to full open at the set pressure. There is no "simmering" or leakage as the tank pressure approaches set pressure.

The vent cover is prevented from opening more than 90° via spring loaded cables. These cables are attached to the cover and the vent body. This will assure the cover to self close once fully opened.



Shand & Jurs "Expanda-Seal" option is available on all pressure pallet assemblies. This feature, shown in blue, significantly reduces leakage. The ballooning effect of the teflon diaphragm effectively seals the valve. The "Expanda-Seal" feature ensures less than .5 SCFH of leakage at 95% of the set point.

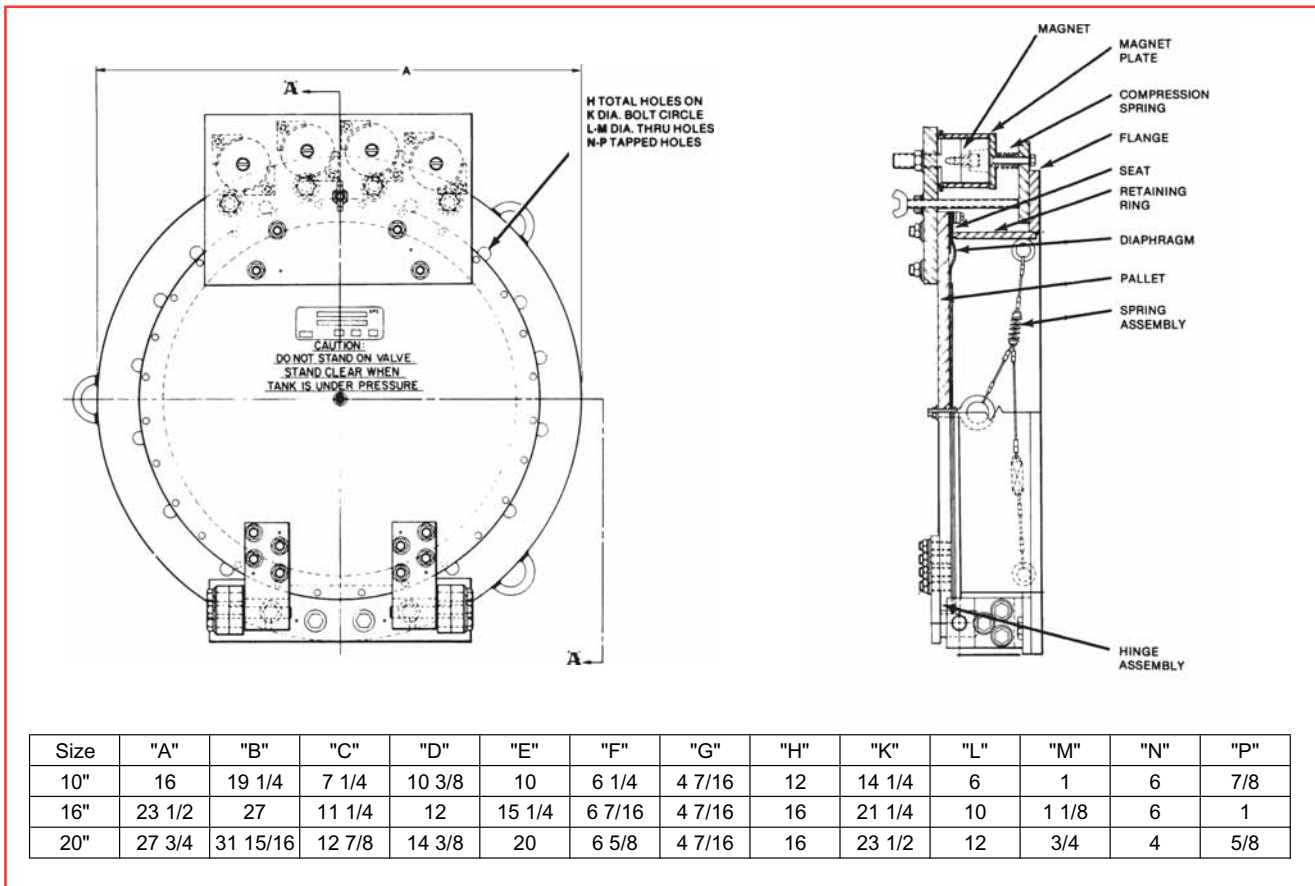
### MATERIALS OF CONSTRUCTION:

Seat: ..... Stainless Steel  
 Flange: ..... Steel  
 Pallet: ..... Steel  
 Hinge Assembly: ..... Steel  
 Hinge Bracket  
 Assembly: ..... Steel  
 Spring Assembly: ..... Stainless Steel - Type 316  
 Magnet: ..... Cast Alnico 5  
 Diaphragm: ..... Teflon Coated Fiberglass  
 Back-Up Gasket: ..... N8090  
 Gasket: ..... N8090  
 Slot Gasket: ..... N8090  
 Magnet Plate ..... Stainless Steel - Type 416  
 Compression  
 Spring: ..... Stainless Steel - Type 302  
 Retaining Ring: ..... Steel

### SPECIFICATIONS:

Pressure  
 Setting Range: .....2.5 oz. to 35.9 oz./sq.in.

Connections:  
 10 and 16 inch: Flat face flange to fit  
 125# ANSI flat flange  
 20 inch: ..... Flat face flange to fit  
 API roof manhole



All designs subject to change. Certified dimensions and specifications available upon request

**MODEL NUMBER SELECTION:**

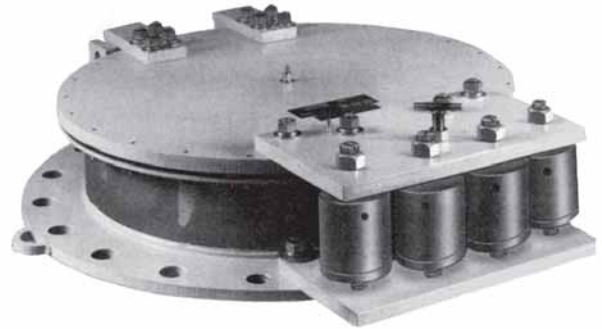
The model number will consist of a base number 94520 followed by two 2 digit numbers which represent the options listed in the following tables.



**ORDERING INFORMATION**

Specify:

1. Model 94520 Emergency Pressure Vent
2. Size Vent Required
3. Body Material
4. Pressure Setting
5. Type of Product Stored



**TABLE I (AB) SIZE AND MATERIAL**

OPTION #	SIZE	MATERIAL
01	10"	STEEL
02	16"	STEEL
03	20"	STEEL 20" FLANGE
23	20"	STEEL 24" FLANGE
11	10"	316 SS
12	16"	316 SS
13	20"	316 SS 20" FLANGE
33	20"	316 SS 24" FLANGE

**TABLE II (CD) PRESSURE SETTINGS**

OPTION #	PRESSURE SETTING
01	2.5 TO 9.9 Oz./Sq.In.
02	10.0 TO 12.9 Oz./Sq.In.
03	13.0 TO 15.9 Oz./Sq.In.
04	16.0 TO 35.9 Oz./Sq.In.