



- Prevention of Field Problems
- Internal Diagnostics of Radar & Transmitter
- Software update of SFI Equipment
- Remote Configuration of Equipment
- PC/Windows Operating System

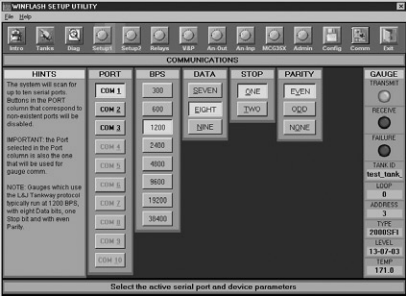
## The L&J MCG 3920 WINFlash™ Software (Windows 2000, XP, Vista)

### MCG 3920 WINFlash™ Software

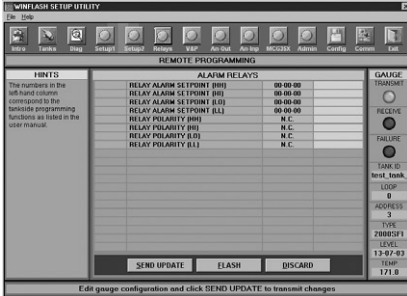
The MCG 3920 system includes the WINFlash™ software which enables the user to take full advantage of the Smart Flash Infrared (SFI) technology available on L&J Engineering equipment such as the 1500SFI Servo Gauge, the MCG1600SFI Radar Gauge and the MCG 2000SFI Transmitter. An optional interface device, the MCG 3281, simplifies connections to the user's network that provides communication to the L&J SFI device. Once connected, all of the SFI functions can then be performed. These functions include remote transmitter configuration, software upgrades, extensive field diagnostics and internal transmitter and radar specific diagnostics.

### User Friendly

The MCG 3920 features easy to understand graphical user interface (GUI) screens as shown below.



COMMUNICATIONS SCREEN



ALARM RELAYS SCREEN



PUMP AND VALVE SCREEN

## Applications

Operation with L&J Family of Smart Flash Infrared products including MCG 1500SFI Servo Gauge, MCG 1600SFI and 1700SFI Radar Gauges, and MCG 2000SFI Transmitters

Remote gauge configuration

Diagnostics and problem location

#### SYSTEM REQUIREMENTS

Microcomputer:	Pentium (200MHz or faster)
Display:	800 x 600 pixels (minimum), Hicolor 65K color (minimum)
Keyboard:	ASCII, Function Keys, Numeric Pad
Ports:	One available serial or usb port
Disk Drives:	CD ROM
Operating System	Microsoft Windows 2000/XP/ Vista

*All designs subject to change. Certified dimensions  
and specifications available upon request.*

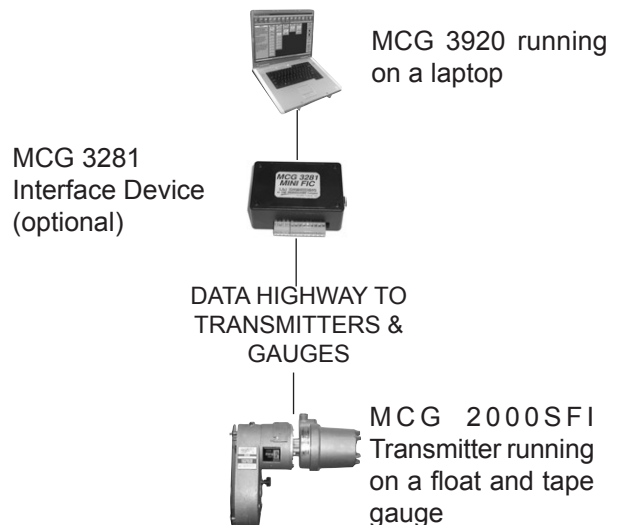
#### INFORMATION REQUIRED TO ORDER:

**MCG 3920 - AB - CD**

PROTOCOL \_\_\_\_\_  
COMM. PORT TYPE \_\_\_\_\_

#### WINFlash™ PACKAGE

WINFlash™ SOFTWARE ON CD



#### TYPICAL CONFIGURATION

#### MODEL NUMBER SELECTION:

The model number will have a base number, **MCG 3920**, followed by 4 digits which represent 2 options.

**MCG 3920 - AB - CD**

TABLE I \_\_\_\_\_  
TABLE II \_\_\_\_\_

#### TABLE I - PROTOCOL

**AB**

11 - L&J Tankway

#### TABLE II - COMMUNICATION PORT TYPE

**CD**

21 - Serial

22 - USB